



### Who can access my data once I add it to the Ruminati platform?

Our platform is designed so that you retain control of your data at all times. Ruminati does not share your data without your explicit consent.

If you do want to share your data with another organisation, you have the opportunity to do so by providing direct consent to a data share request sent by that organisation.

Even when sharing data with another organisation, farm-level data you enter onto the Ruminati platform when preparing your emissions report (e.g., your consumables expenditure and livestock purchase data) will not be shared. We will only share your emissions insights and statistics.

**Consumables**

Petrol use (L/year) [?] Diesel use (L/year) [?]

Electricity usage (kWh/year) Calculate [?] % of electricity sourced from renewables [?]

Submit

**Livestock**

What is your preferred measurement?  DSE  AE

Beef DSE Calculate DSE [?]

Sheep DSE Calculate DSE [?]

Submit

### What happens when an organisation requests that you share some of your data with them?

1. You'll receive an email providing specific information on what data they are requesting you share (your total emissions number from your baseline and any emissions reduction activities you've commenced).
2. OR you can view that data share request on the Corporate Partners page within your Ruminati account. No information will be shared by Ruminati until you have provided consent.

**Note:** You can revoke the consent for data sharing *at any time* on the Corporate Partners page.

### When I consent to sharing my data with another organisation, what do they see and how can they use that information?

Each data share request you receive details the exact datapoints you're agreeing to share with that organisation.

These include:

- Basic details on your enterprise, such as its name, location and your email.
- Whether you've commenced or completed your baseline, or started reduction planning.
- Your emissions summary data, or results of your baseline and reduction plan report.

That's it!

**RUMINATI** BASE

Cancel

**Connect With Corporate Partner**  
Share your Ruminati Farm information with corporate partners.

Partner to share with  
Demo Organisation

Farms info you want to share  
Select farm

Demo Organisation is requesting consent to access some of your data to enable them to better understand and estimate emissions levels and mitigation action across their supply chain.  
Your consent is requested to share the following 6 data groups:

<b>Enterprise</b> <ul style="list-style-type: none"><li>User name &amp; Email</li><li>Enterprise name</li><li>Enterprise commodities</li></ul>	<b>Emissions Report Status</b> <ul style="list-style-type: none"><li>Baseline report initiated or completed</li><li>Baseline report year</li></ul>	<b>Reduction Plan Status</b> <ul style="list-style-type: none"><li>Reduction plan initiated</li><li>Reduction plan year</li><li>Planned reduction categories</li><li>Planned reduction amount</li></ul>
<b>Location</b> <ul style="list-style-type: none"><li>Property location (as a single point centroid)</li><li>Area of property (hectares)</li></ul>	<b>Emissions Report Results</b> <ul style="list-style-type: none"><li>Total emissions</li><li>Total sequestration</li><li>Net emissions</li></ul>	<b>Emissions Intensity</b> <ul style="list-style-type: none"><li>CO<sub>2</sub>-e per kg or tonne (for each commodity)</li></ul>

By granting your consent, you are agreeing to Demo Organisation being provided with access to view these specific datapoints on the Ruminati platform and aggregate them with other data points to estimate their emissions profile. This consent does not provide Demo Organisation with the authority to share your information directly with any other parties (except in aggregated form), or attribute the information directly to your enterprise in their communication with other parties.

At any time you have the ability to withdraw this consent, or review which entities and specific data you have provided your consent to, via the Corporate Partners page in your Ruminati profile. After you withdraw consent Demo Organisation will still retain access to the datapoints that were shared during the time of the connection, however no new data you create will be shared with them.

I accept

Share



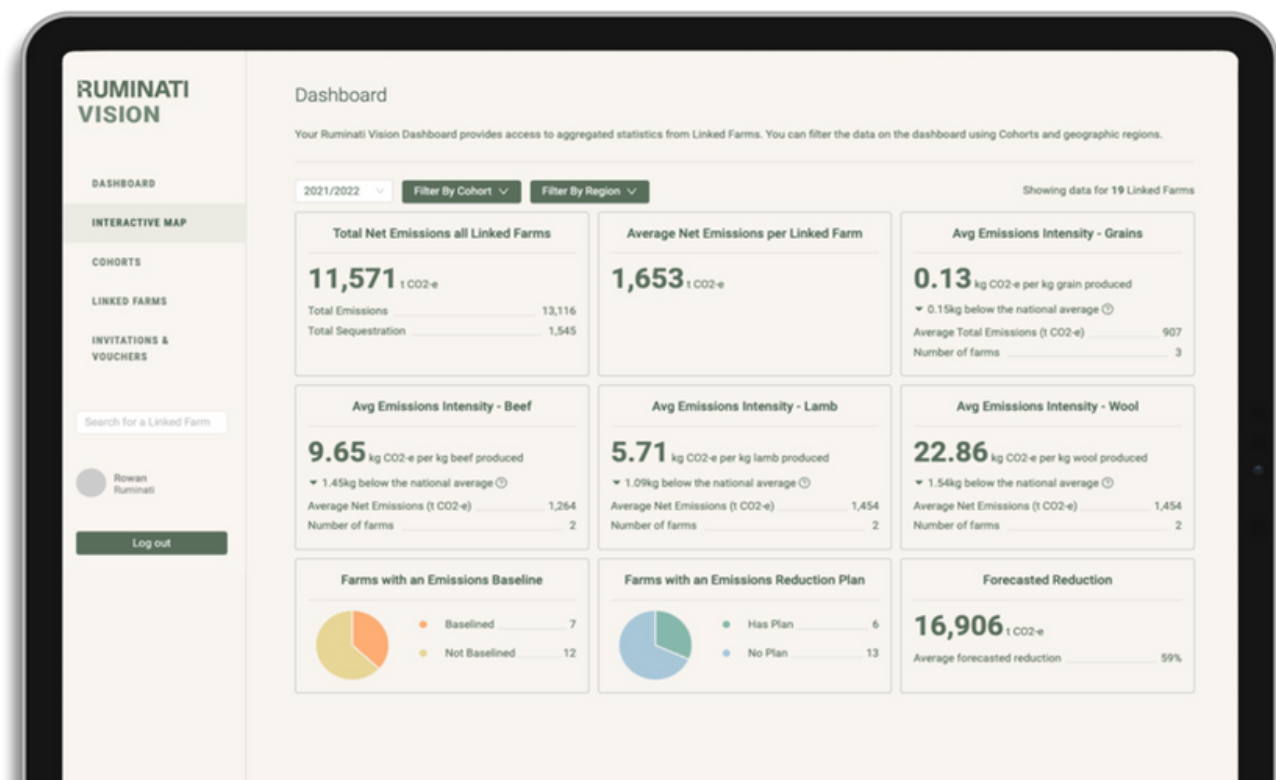
### What does the organisation see?

When you confirm your consent to share your data, it becomes available to the requesting organisation in their Ruminati VISION Dashboard. The requesting organisation will never see your farm level data, only the summary data on emissions that you have consented to share (farm's total emissions and emissions intensity).

Your summary data can then be used with other farm's summary data to construct an aggregated view of different supply chain's emissions through the Ruminati VISION dashboard.

Ruminati VISION does not enable organisations to share your summary information with others, and Ruminati's terms of use prohibit them publicly attributing any data to your enterprise.

Here's an example of what organisation's see on their Ruminati VISION dashboard:



### How does Ruminati protect my privacy and confidentiality?

We care deeply about protecting the confidentiality of your farm data and keeping your details private.

Our data privacy and cybersecurity policy puts in place robust information security and cyber security safeguards, to ensure your data is collected, stored and protected in accordance with industry best practice, at all times.

Your data is never stored, sent or processed outside of Australia. You can find out more information on our data privacy policy on our website or at this link: <https://ruminati.com.au/privacy/>



### **Does Ruminati use my data for any other purpose?**

Ruminati's Terms Of Use permit us only to use any data you contribute to our platform in the delivery of the services to you, such as generation of your emissions report, or in aggregated form, to generate regional or industry-level insights.

In other words, we will only utilise your data to produce aggregated insights where any details which could identify your company or your property specifically have been removed and your data has been pooled with others.

We will never directly attribute data or insights to your organisation, unless we have your direct and explicit consent to do so.

You can find out more information on our terms of use on our website, at this link:

<https://ruminati.com.au/terms-of-use/>

-END-